

Vista User Manual

Ver:6.0.1.xxxx

1. Package Content

Before installation, please check if the following package content is missing. If anything missing, please contact your local distributor.

- Bluetooth Mini USB Adapter
- Software CD including User manual, Driver and utility

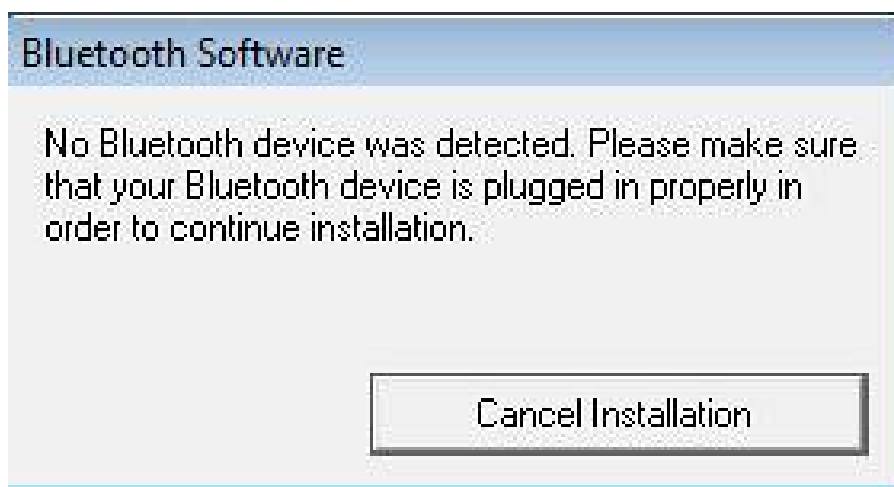
Notice : for MAC PC, please install the Headset Driver from the equipped CD diskette for Bluetooth headset application, the other Bluetooth profiles are supported by MAC's built-in stack as stated in the system manual. "

2. Installation steps

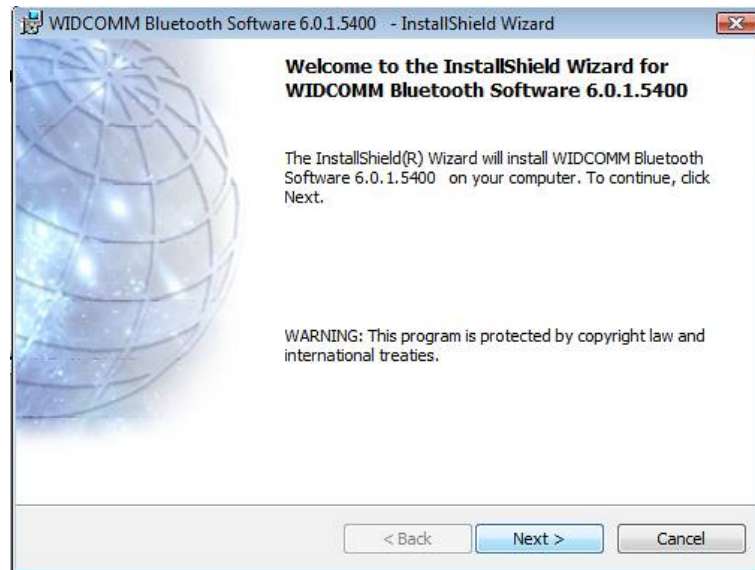
NOTE : Please install the USB Bluetooth Software Driver before plugging the USB adapter !

2-1.Place the installation CD-ROM into the PC, the setup should start automatically. If the setup does not start, please go to Windows Explorer, locate the CD-ROM and run [setup.exe].

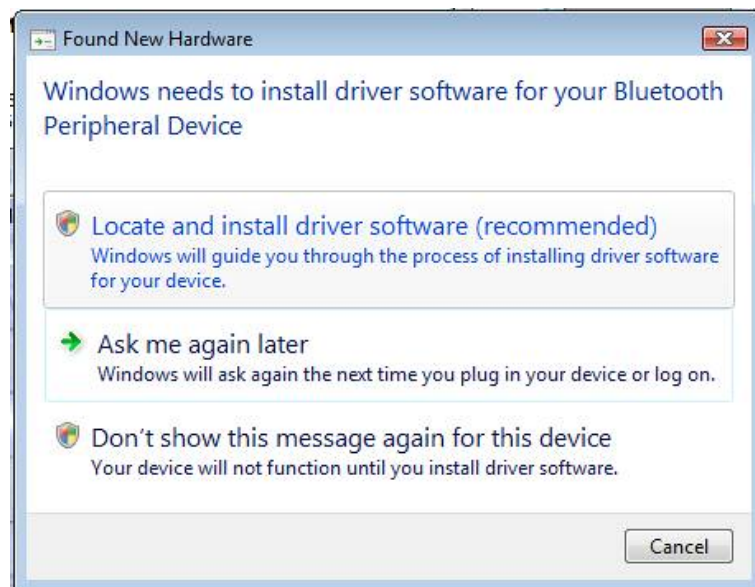
The [Bluetooth device not found] window appears. Plug the USB Bluetooth adapter into the USB port. Click [OK].



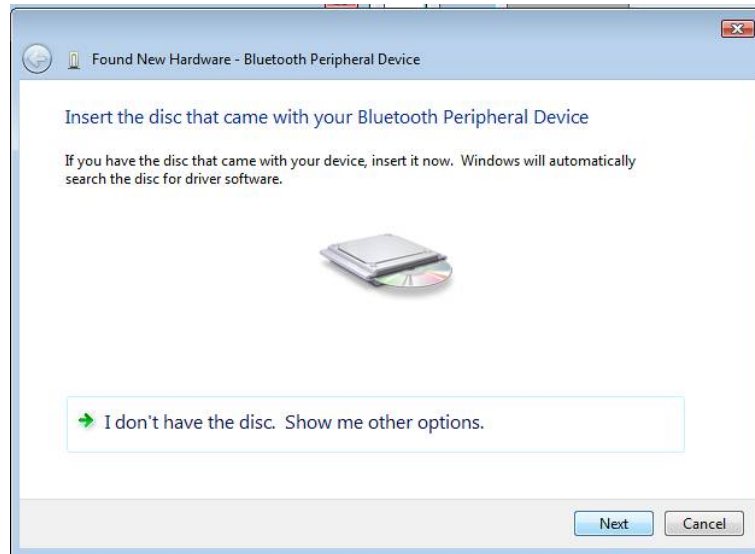
2-2. On the Welcome screen click [Next] to continue.



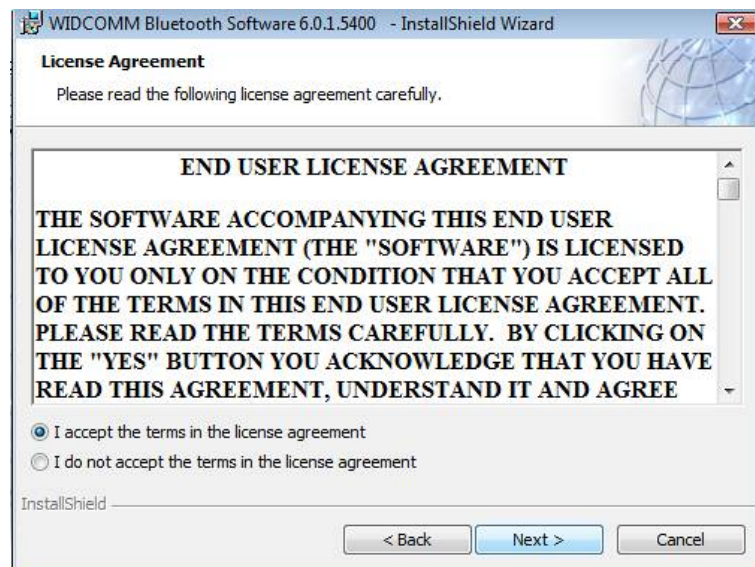
2-3. Click [Locate and install driver software].



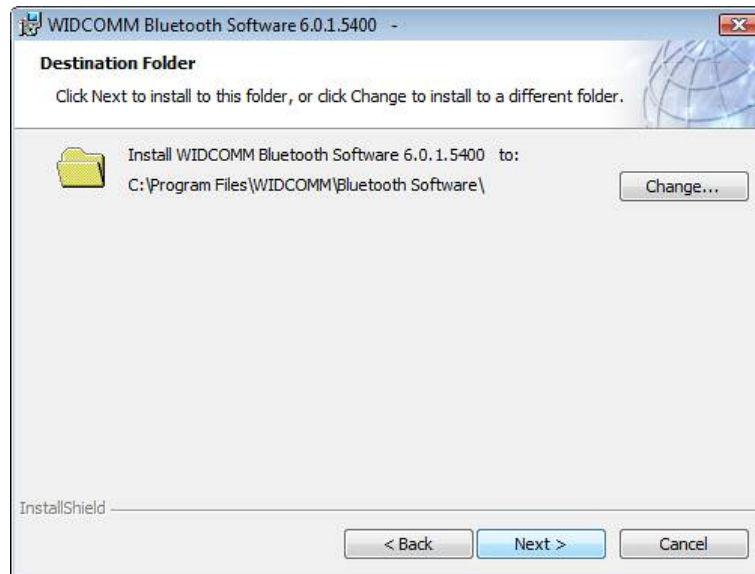
2-4. Click [Next].



2-5. Read the License Agreement and select [I accept the terms in the license agreement]. Click [Next].



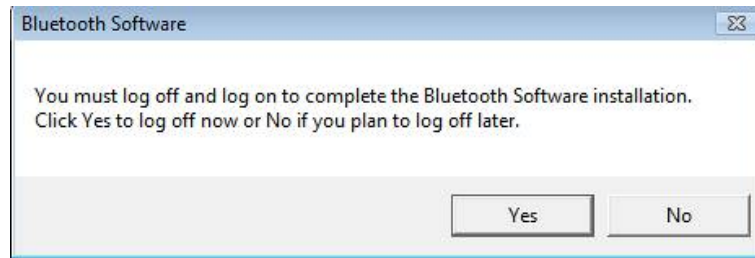
- 2-6. Click [Next] to accept the default destination folder, click [Change] to browse to a new destination folder for the Bluetooth software.



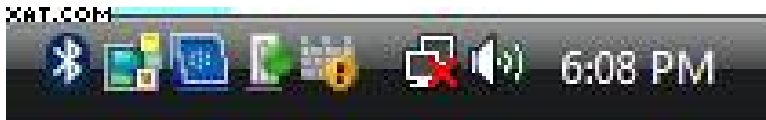
- 2-7 Click [Finish] to complete the Bluetooth software installation.



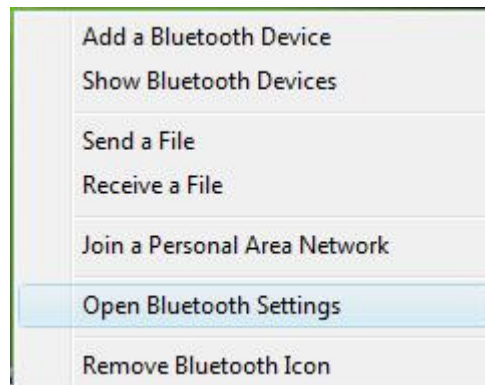
2-8 Click [Yes].



2-9 The CD-ROM driver will be completely installed and the [Bluetooth icon] resides in the Windows system tray.



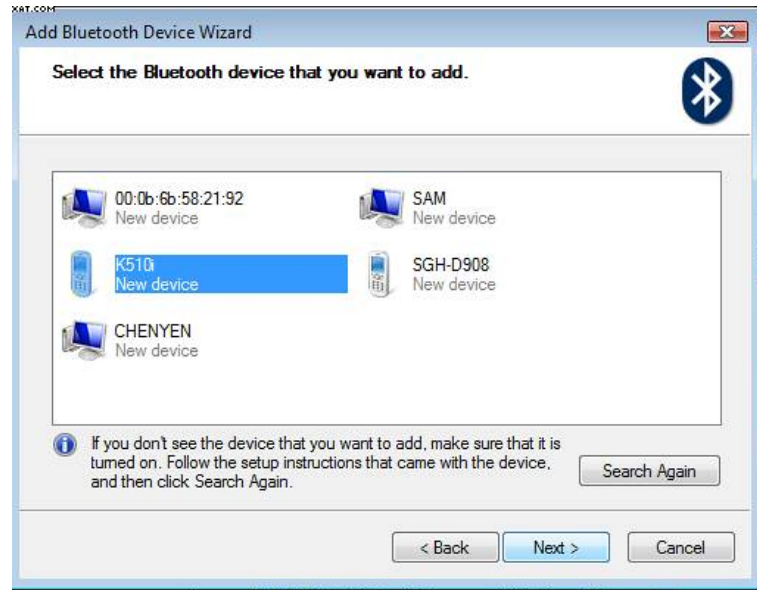
2-10. Click the [Bluetooth icon] then Click left button to “ add a Bluetooth Device” .



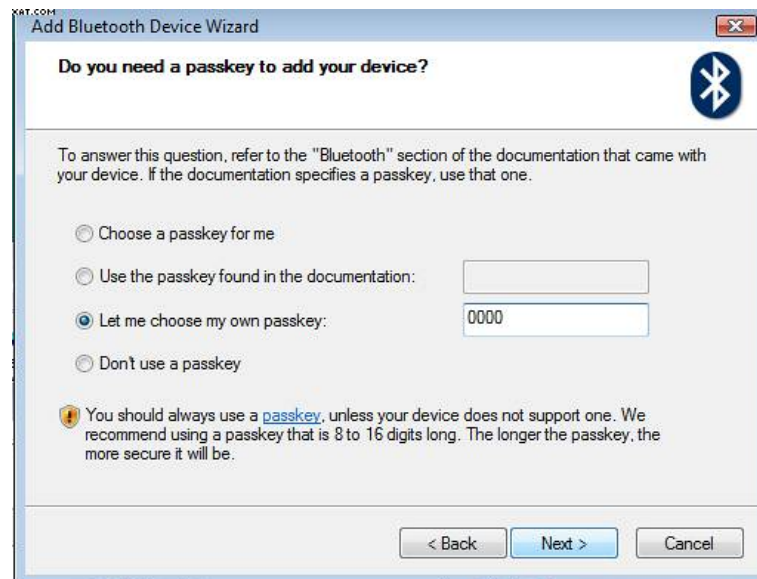
2-11. Click [Next].



2-12. Select the Bluetooth device that you want to add, and click "Next" .



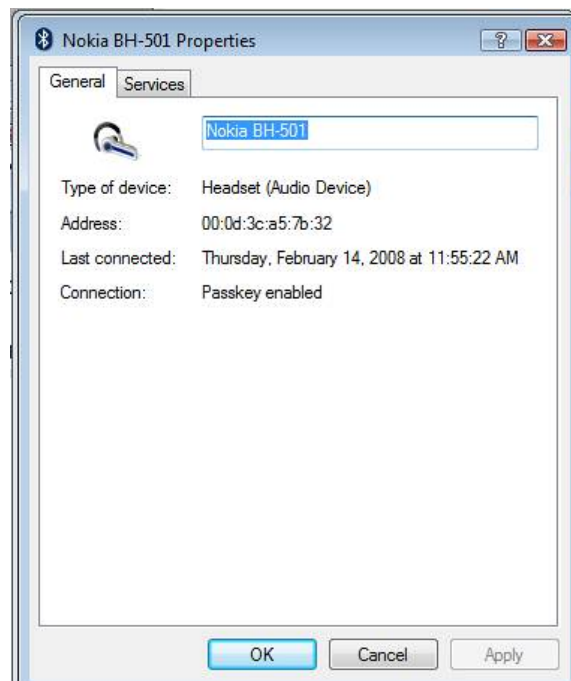
2-13. You need to enter the Passkey. You can select whether you want Windows to generate a Passkey for you, use a specific Passkey contained in the documentation of the Device, or choose a passkey yourself.



2-14. completed Bluetooth installation.



2-15. Click " OK " or rename of a device name.



2-16. Select a device and click “ OK” .

